

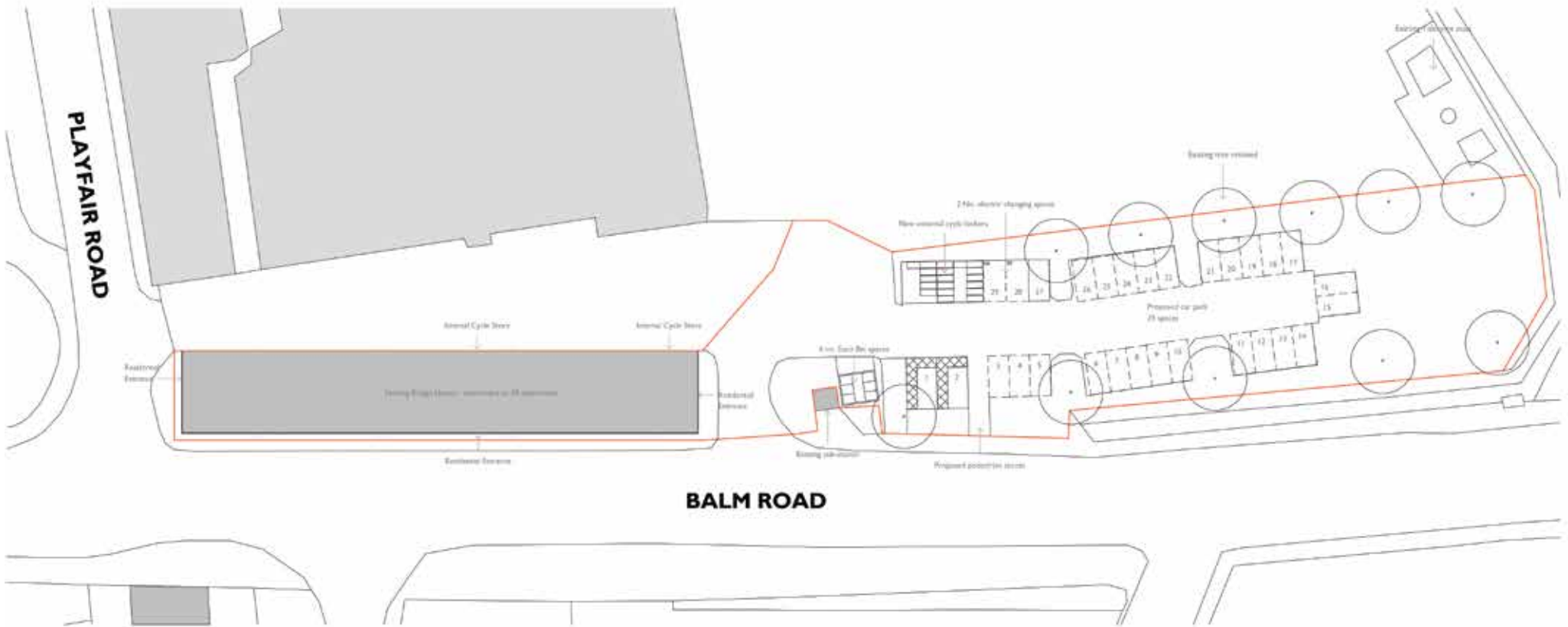


# FLOORPLANS

# THE BUILDING

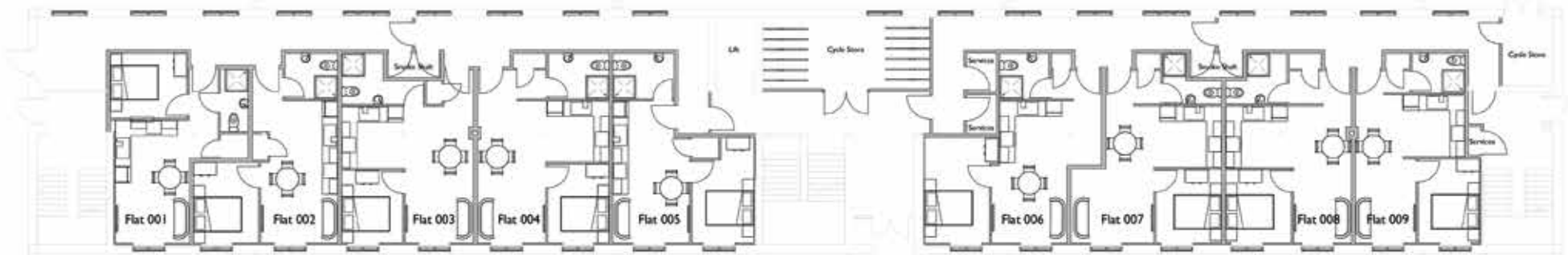


# PARKING PLAN/SITE PLAN



# FLOORPLANS

## GROUND FLOOR



**BALM ROAD**

## FIRST FLOOR



**BALM ROAD**

# FLOORPLANS

## SECOND FLOOR



## ROOF LEVEL





## **NORTH PROPERTY GROUP**

+44 (0) 113 426 4444

[hello@northpropertygroup.co.uk](mailto:hello@northpropertygroup.co.uk)

[www.northpropertygroup.co.uk](http://www.northpropertygroup.co.uk)